



PUTTERILLS

EST. 1992

15 Knebworth Gate, Roebuck, Stevenage, Hertfordshire, SG2 8DF

Price: £400,000 Freehold

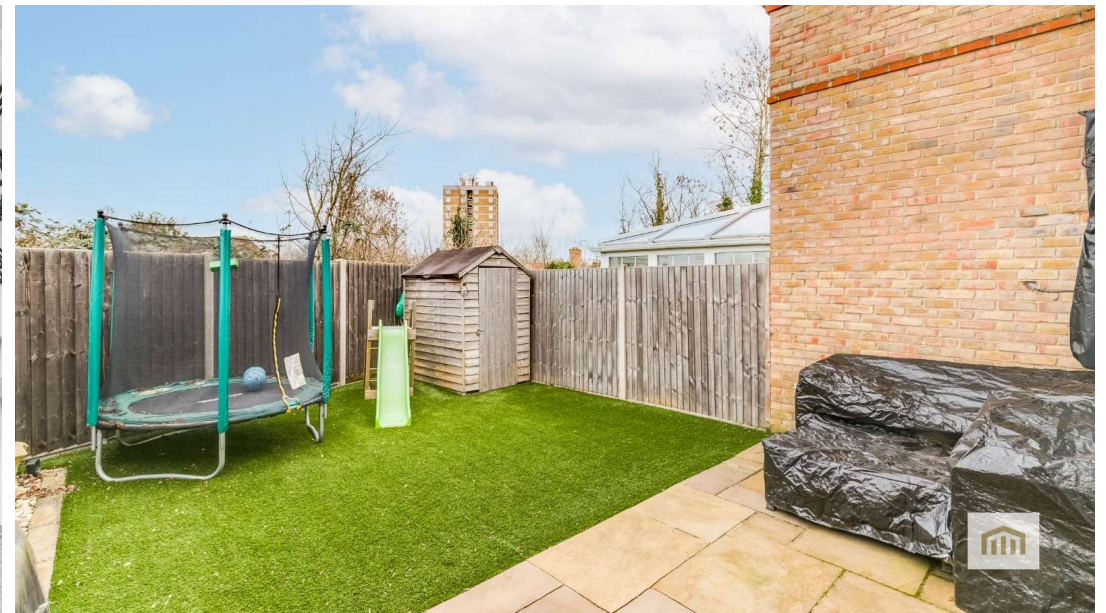
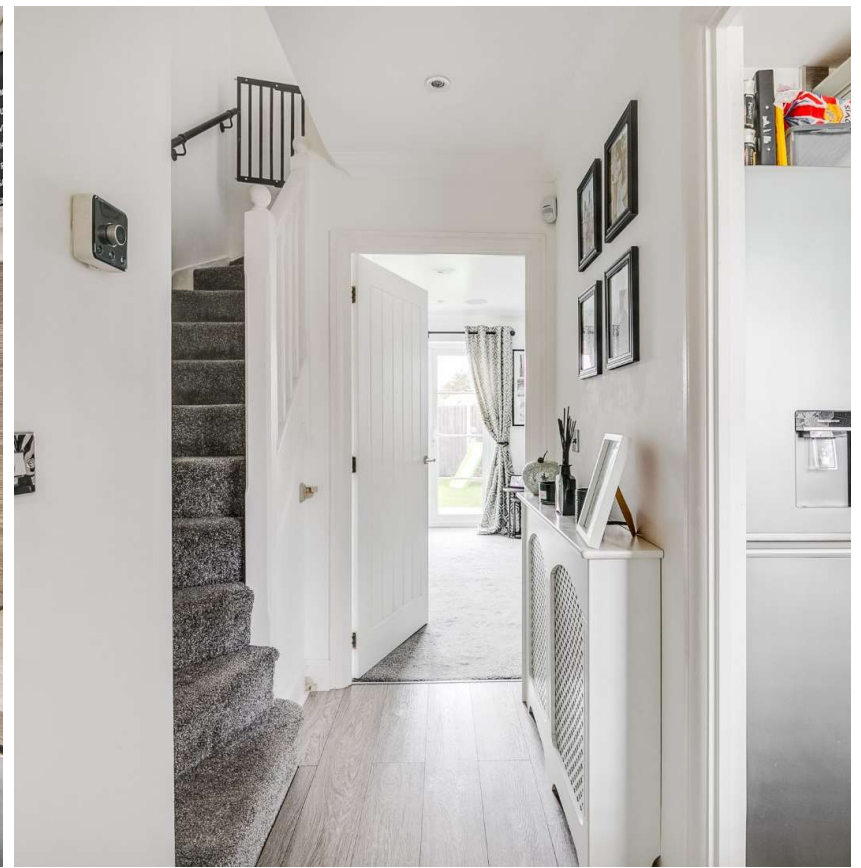
Lovingly improved 3-bedroom semi-detached home in popular cul de sac

This well presented 3-bedroom semi-detached house is tucked away in a highly regarded cul-de-sac on the borders of Stevenage and Knebworth, and within close proximity of shopping facilities including a Tesco store.

The well-presented accommodation comprises: Entrance Hall with staircase, cloakroom, modern fitted kitchen, and lounge with doors to the garden. To the first floor are 2 double bedrooms and a modern family bathroom, whilst on the second floor is an impressive master bedroom with Velux and deep picture window. There is a low maintenance private rear garden and allocated parking for 2 vehicles. Energy rating: C

Close-by Knebworth village has a comprehensive High Street with shops that cater for daily needs. There is a chemist, post office, doctors' surgery, two dentists, Co-op general store, Indian restaurant, Chinese take away, two cafés, wine merchants, Trussells butchers (trussellsbutchers.co.uk), & a well-regarded junior/mixed infant school. The mainline railway station with frequent service allows access to London Kings Cross in around 25/35 minutes. There are C of E & RC churches, Golf club & a great recreation ground with tennis courts, bowling green and toddlers play area.





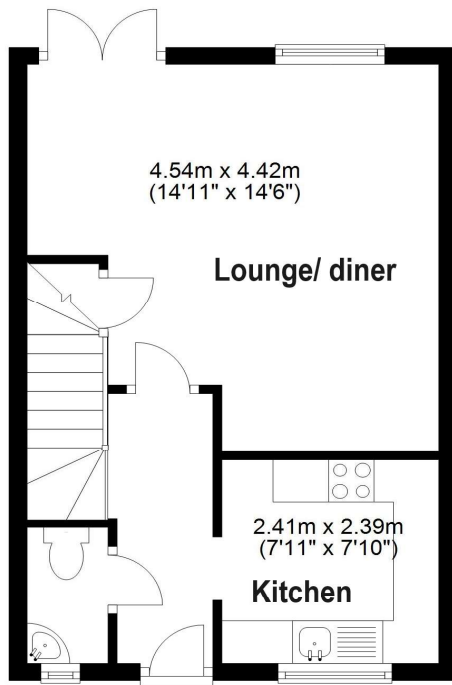






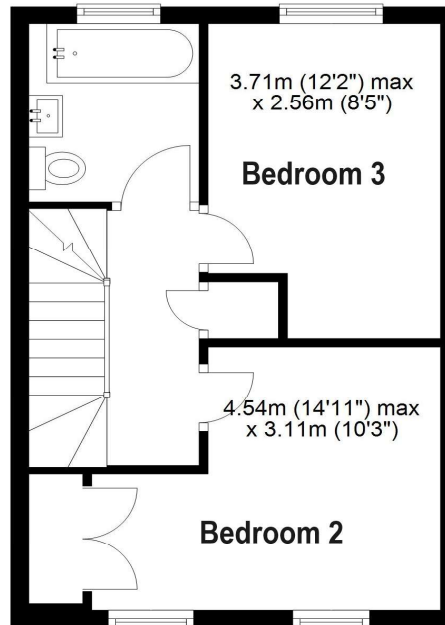
Ground Floor

Approx. 31.3 sq. metres (337.1 sq. feet)



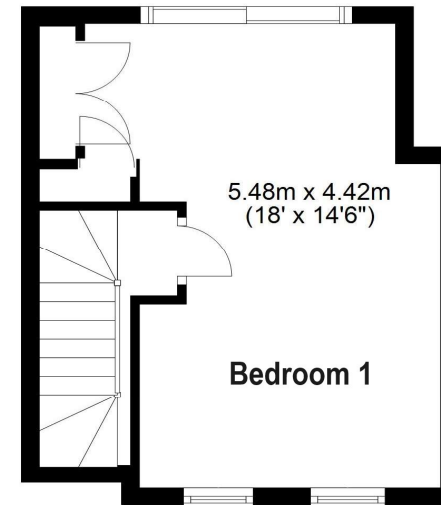
First Floor

Approx. 31.3 sq. metres (337.4 sq. feet)



Second Floor

Approx. 23.1 sq. metres (249.0 sq. feet)



Total area: approx. 85.8 sq. metres (923.5 sq. feet)